



the OUTRIGGER

R. Baker & Son Magazine
Disabled Veteran Owned and Operated

March 2009

74 Years of Great Relationships: Who's Next?

It was during the Great Depression that Robert Reuben Baker founded his new company, R. Baker All Industrial Services. Certainly, 1935 may not have been the best of times to start a business, but Robert Reuben, who was known by his nickname, "Ruby", was undeterred. Under Ruby's steady hand, R. Baker soon flourished, becoming one of the most highly respected contractors in the rigging, dismantling and demolition industry.

From early on, Ruby recognized that a key component to the success of his business was the establishment of good contractor and customer relationships. As R. Baker gained industry standing through their accomplishments and expertise, Ruby made sure that equal importance was given to developing and nurturing solid relationships with clients. He understood that trust and loyalty would sustain his company through good times and bad, and this philosophy became embedded as part of the R. Baker culture.

Seventy-four years, five wars, and numerous economic busts and booms later, Ruby's son Walter and grandsons David and Mark still espouse his principles when it comes to the value of good customer relationships. "Absolutely, customer relationships are the core of this company", says David Baker.

Though most of R. Baker's original clients from the 1930's are no longer in existence, a direct lineage of many of our present-day relationships can be traced back many decades. And perhaps, says David Baker, maybe even to relationships forged by Ruby Baker himself.



inside this issue...

the value of relationships - the wpa: what you might not know
quality awards - yankee atomic: atop a snowy mountain
ebj business achievement award - carbon monoxide poisoning

THE WPA: WHAT YOU MIGHT NOT KNOW - The New Deal

In 1935, the same year R. Baker & Son was founded, Franklin D. Roosevelt created the Work Projects Administration (WPA) as part of the New Deal.

The WPA provided 8.5 million jobs for hard-hit Americans from 1935 to 1943. It touched almost every community in the nation, with 125,110 public buildings, 8,192 parks and 853 airports built. It gave us the Hoover Dam, the Chicago sewer system, and built or improved enough roads to circle the globe 24 times. While the WPA was not without controversy, its positive impact on our nation's infrastructure is undeniable.

Comparisons are now being made between the WPA and President Obama's stimulus plan. Like the WPA, today's plan has drawn both praise and criticism, but there is a consensus in the engineering community that the condition of our nation's aging infrastructure is poor (the American Society of Civil Engineers gives it an overall grade of "D"). There is urgent need for improvement.

R. Baker & Son was born the same year as the WPA, and we participated in some of its projects. While the WPA is long gone, we are still here – and going strong – today. Our nation has weathered some hard times since 1935, and R. Baker & Son is dedicated to doing our part in helping America to recover and emerge better and stronger than ever.



EBJ Business Achievement Award

Environmental Business Journal (EBJ), the leading business newsletter for the environmental industry, recently honored R. Baker & Son with their annual "EBJ Business Achievement Award". Each year, EBJ recognizes outstanding firms for their strong financial performance and growth, as well as for specific projects which are significant in the advancement of the environmental industry.

R. Baker & Son was recognized in the "Practice Innovation: Sustainability" category for the successful deployment of our Green Initiative Program, under which we attempt to recycle 100% of all waste materials generated during our projects. These recycling practices include the crushing of concrete into useable aggregate, the recovery and recycling of metals, the selling of used and surplus equipment, and the salvage of used wood timbers and materials.

We are proud of our Green Initiative Program, and we are pleased and honored to have received this recognition for our continued dedication to preserving our environment.



Congratulations to R. Baker & Son's most recent Quality Award winner: **Mike Cuevas**

The Award Program has been established to recognize individuals who have contributed to R. Baker & Son's growth and success for their outstanding achievements in safety, project execution and customer satisfaction above and beyond the call of duty.

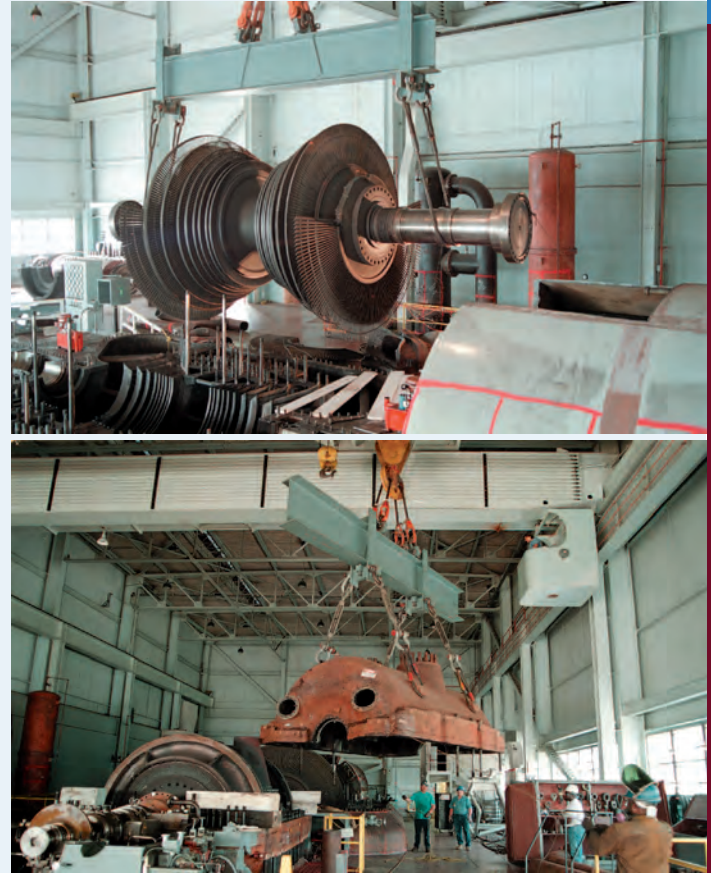
R. Baker & Son performed the dismantling and removal of the secondary side of the Yankee Atomic nuclear power plant in Rowe, MA. This complex 6-month project involved a 185 MW steam turbine generator and its ancillary equipment, including a high-pressure turbine rotor and blading, an installed low-pressure turbine rotor, the generator itself, the rotating and static exciters, and transformers.

Before work could commence, all of R. Baker & Son's on-site employees had to complete a 40-hour safety training course conducted by the Nuclear Regulatory Commission. Radiation detection badges were required to be worn at all times during the project.

Much of the turbine dismantling was executed by utilizing the plant's existing 100-ton bridge crane. Many of the unit's components, such as the 115-ton turbine cover and the 178-ton generator stator, exceeded the cranes capacity and required partial dismantlement and engineered lifts. Strict lead abatement procedures were required before all burning and cutting, and all loads were radiation-tested before being transported off-site.

R. Baker & Son takes great pride in our completion of this strictly-regulated and logistically complex project while maintaining our outstanding 5-year incident-free safety record.

Yankee Atomic: Atop a Snowy Mountain



OSHA QUICK CARD

Carbon Monoxide Poisoning

Effects of Carbon Monoxide Poisoning -

- ◆ Severe carbon monoxide poisoning causes neurological damage, illness, coma and death.

Symptoms of CO exposure -

- ◆ Headaches, dizziness and drowsiness.
- ◆ Nausea, vomiting, tightness across the chest.

Some Sources of Exposure -

- ◆ Portable generators/generators in buildings.
- ◆ Concrete cutting saws, compressors.
- ◆ Power trowels, floor buffers, space heaters.
- ◆ Welding, gasoline powered pumps.

Preventing CO Exposure -

- ◆ Never use a generator indoors or in enclosed or partially enclosed spaces such as garages, crawl spaces, and basements. Opening windows and doors in an enclosed

space may prevent CO buildup.

- ◆ Do not use a generator outdoors if placed near doors, windows or vents which could allow CO to enter and build up in occupied spaces.
- ◆ When using space heaters and stoves ensure that they are in good working order to reduce CO buildup, and never use in enclosed spaces or indoors.
- ◆ Consider using tools powered by electricity or compressed air, if available.

For more complete information visit the OSHA web site or call OSHA: www.osha.gov 800-321-OSHA